



SmartTouch®
Controller



Foot pedal
Pro & Air Pro only



- Perfect heat & pressure distribution
- Double plates of 40x50 cm

- Robust frame
- Important height between plates

User friendly :

- * Bi-manual control (+ foot pedal control on Duplex Pro and Air Pro version)
- * New SmartTouch® interface
- * Automatic translation from one plate to another (on Duplex Pro / Air Pro Version)

- Suitable for laser transfer applications & pretreatment drying
- Ideal for high production
- Manufactured in France
- 2-year guarantee on the machine
- 10-year guarantee on heating plate



Set programs



QuickRelease®
system



GPX 3200W

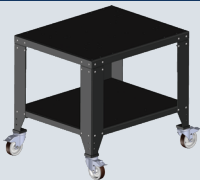


Pre-heat time

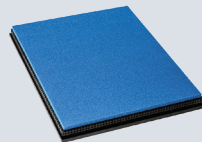


Membrane
(AIR PRO version)

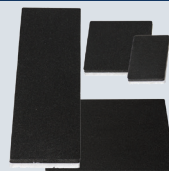
OPTIONAL ACCESSORIES



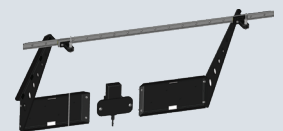
Support table



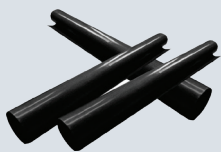
DTG plate



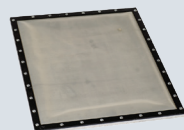
Set of 4 plates



Laser pointer



Teflon Sheet



Membrane plate
(only for Duplex Air Pro)



Nomex® cover



Compressor

Email

sales@sefa.fr
support@sefa.fr
www.sefa.fr



Phone

Office : + 33 4 68 74 05 89
Fax : + 33 4 68 74 24 08



Address

SEFA SAS
Z.I. PASTABRAC
11 260 ESPERAZA (FR)

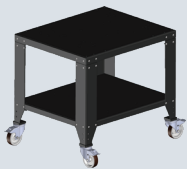
TECHNICAL CHARACTERISTICS

Type	Pneumatic
Operation	Swing - Rotating plate
Platen size	40x50 cm / 16x20"
Max thickness	45 mm
Weight	193 Kg / 425 lbs
Pressure	625 gr/cm ²
°C / °F Max	220 °C / 429 °F
Power	3200 W
Power supply	240 V Single-phase
Amperage	14 A

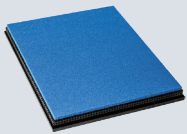
Applications	Flex, ChromaLuxe, DTG, Pretreatment, Sublimation, Screen Printing, Laser Transfer
--------------	---

Dimensions	713x891x1099 mm 28x35x43"
------------	------------------------------

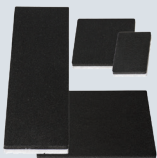
OPTIONAL ACCESSORIES



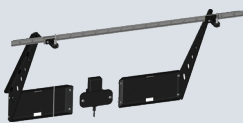
TAB-98 PRO / R
Support table (optional castors available).



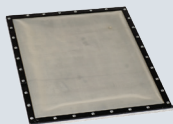
PLA-DRY M
Sponge plate to dry pretreated clothes.



PLA-SET
Set of 4 plates
12 x 8 cm, 15 x 15 cm,
12 x 45 cm, 25 x 30 cm.



CROI-160
2-laser system to place your transfers with more precision (exists with 4).



PLA-3035 AIRCLAM
Membrane plate for Duplex Air Pro only
30 x 35 cm.



HOU-50
Heat resistant Nomex® cover for easier threading and protection.



COMP-111
Silent compressor 42dB 50L.
111Lt/min.

SETTINGS



New SmartTouch® controller developed by Sefa

Recipes menu with adaptive regulation parameters depending on the job: flex, sublimation on textile, sublimation on rigid substrates, DTG...

Advanced electronics

- 10 fully editable recipes menus
- Independent time for each plate
- Multi timer (up to 4 different times)
- Cycle counters
- Stop cycle function
- ECO GREEN mode

From 0 to 600 sec (precision +/- 1%).

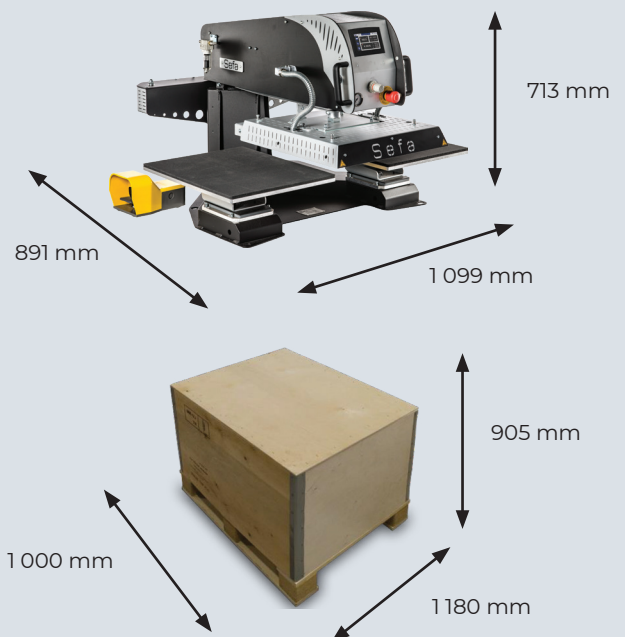
From 15 to 220°C (precision +/- 1%).

Heating time to reach 180°C : 10 min.



180° reversible
C-shaped lower
part with Quick
Release system

DIMENSIONS



Box weight CAI-DU-PRO : 46 kg